

POWER INVERTER

User Manual

1.Applications:

Notebook, Computer, Radio, TV,VCR, Lamp, Fan, Fax, Drill, Microwave, Oven, Mobile phone charger etc.

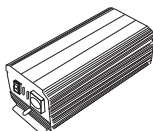
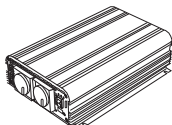
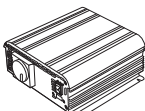
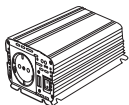
2.Figures: AC Front Panel of Inverter Series

300W Series

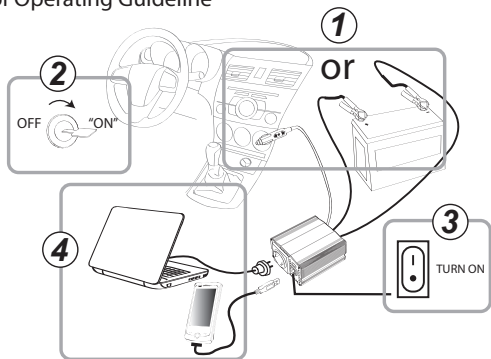
600W Series

1000W / 1500W Series

2500W Series



3.Figure of Operating Guideline



A. ①+②

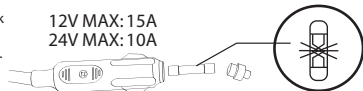
- Connect the cigarette lighter adapter to the cigarette receptacle of the cars or yachts.
- Connect the battery cables to the power input terminals on the rear panel of the inverter. The red terminal is positive (+) and black terminal is negative (-). Insert the cables into the terminals and tighten screw to clamp the wires securely. And then start the engine of the vehicle or the boat.

B. ③+④

Before installing the inverter, make sure the main switch must be "OFF".
After completing installation, making sure the ON/OFF switch on the front panel is "ON".

- C. When the main switch is turned on but the LED indicator does not turn to "GREEN" color, please check the inside fuses of the cigarette plug. Then, please replace the blown fuse with the same amperage one.

12V MAX: 15A
24V MAX: 10A

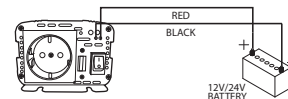


D. Cautions:

Connect to 12v / 24v / 48v battery or other 12v / 24v / 48v power source.

【+】 is positive, 【-】 is negative. Reverse polarity connection will blow internal fuse and may damage inverter permanently.

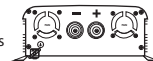
300W Series



600W Series



1000W / 1500W Series



2500W Series

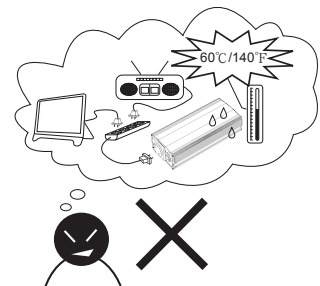


Figure: Battery Terminals

The Inverter	Input Voltage	Do Not Connect Battery
	12V	24V or 48V
	24V	12V or 48V
Auto 12V/24V		48V

E. Safety Guidelines:

- Do not use the TITAN inverter in temperatures over 140° f (60° c).
- Do not expose the TITAN inverter to water, rain, snow, or spray.
- If you connect an AC load that is rated too high or a load that draws excessive surge power, the inverter would shut down. Then, the red fault light comes on.
- The red fault light indicates that the inverter has shut down. Shutdown is caused by low or high battery voltage, overload, or excessively high temperatures.



4. Troubleshooting:

If the inverter does not function properly, the possible causes are shown as below,

- 1) Poor contact: completely clean contact parts.
- 2) Fuse blown: replace the inside fuse with equivalent quality of cigarette plug.
- 3) Overload shutdown: remove load to lower than the maximum input power.
- 4) Low-battery shutdown: recharge the battery and resume the operation.
- 5) Thermal shutdown: heavy loads under a long-time use. The AC inverter will automatically shutdown for protection. When the inverter is overtemp, please adopt the steps (A to C) below to protect it and your electronic devices:
 - (A) Switch off the power switch of this inverter.
 - (B) Decrease load of this machine. Ex. Remove some appliances or wait until the inverter is cooled off.
 - (C) Switch on the power switch of this inverter.

5. Cautions:

For the best performance, please place the inverter on a flat surface in a location that is:

- 1) Well ventilated.
- 2) Keep the inverter away from sunlight and any flammable substances.
- 3) Keep out of reach for children.
- 4) Do not allow water or other liquids to splash on the inverter.

※For the detailed product specification, please kindly find it on the package.

