

Rechargeable Bluetooth Air Mouse WM001BL

User Manual

Patent:M324249

Brief

The Rechargeable Bluetooth Air Mouse WM001BL is a multiple-axes hand-held pointing device for computer. It is able to transform the space movement of the human hand in the air into an accurate displacement of the screen pointer. Its movement detection technology relies on a multi-axes motion detector encapsulated in the device that analyze the rotation of the wrist or elbow. In conclusion, this is the perfect device to control the accurate movement of a screen pointer in an intuitive way.

Limiting within 10 meters communication range, users can control the mouse pointer in their shown in the screen in freely roaming once they push the start button. Besides, the device is also equipped with four multimedia buttons whose function can be user-defined according to his usual practice just like a remote controller (Driver together). In addition, the device acts as a normal wireless mouse when it is put on the flat desk surface. Moreover, a rechargeable battery through USB port assures its power autonomy.

While WingMouse is used at first, you should charge battery to be full (about 4 hours, the charge LED changed from Red color to Green color), then you also have to make the positioning process at first usage after battery charged fully (refer to user manual on Special Operations section of page 5 for positioning procedure.)

Package



Rechargeable Bluetooth Air Mouse



Retractable USB Cable

Specification WM001BL

Product Name	Rechargeable Bluetooth Air Mouse
Motion Detector	Gyro / Laser
Sensor Resolution	Gyro 0.15 °/s ; Laser 800DPI
Wireless Communication Range	About 10 meters
Bluetooth	2.1 compliant
Battery Charge Pattern	USB Port
Battery Life	Rechargeable battery fully, Air mouse 6 days each day working 2 hr Table mouse 10 days each day working 5 hr
Power	<ul style="list-style-type: none"> Operating RF transmit power <-3dBm, normal -40~-70dBm Battery voltage 4.2V Operating current 31 mA Standby current 2 mA Sleep mode current 0.8 mA
Mechanical Size	56(W) x 38(H)x 120 (L)mm
Weight	73g
OS Requirement	<ul style="list-style-type: none"> Windows 7 Windows Vista™ Windows®XP Mac OS X Linux PS3

Install (Figure Description)



Functions



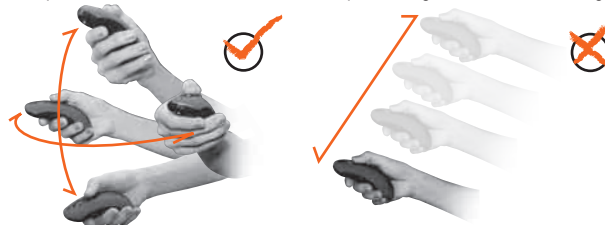
Buttons Functions

1. Mouse buttons and Scroll wheel have similar functions as the standard mouse.
2. Push the 'BACK' button for previous operation.
3. Push the 'SEL' button just like using the mouse Left button (Holding START and SEL buttons simultaneously allows for mouse drag function)
4. Push the 'PLAY' button for multimedia play and pause functions.
5. Push the 'END' button to close the last-layer window.

Operations

In the air

The pointing apparatus is able to control the mouse cursor corresponding to the arbitrary planar of the human hand. It detects the movement of the wrist or elbow, as shown in the Left Figure. If there is only a linear motion in the air, the rotation sensor of the mouse will give no output and the mouse cursor almost stops moving, as shown in the Right Figure.



Note: It is normal that the cursor of mouse will jump sometimes, because the shaking of the hand will accumulate the input

On the desk

The mouse can be used on the desk. A touch switch on the lower part of the mouse triggers the optical sensor, which allows working on the table.



WingMouse Bluetooth setup

1. You must turn off any other Bluetooth-enabled mouse, and then turn on the power switch on the back of the WingMouse.
2. Ensure that your computer's Bluetooth device is ON, and then proceed to the next step.
3. In the Windows taskbar at the bottom of the screen, right-click on the Bluetooth icon click Start Bluetooth, and then follow the instructions to activate Bluetooth.
4. In the Bluetooth Settings window, click New Connection.
5. When the Add New Connection wizard appears, click Next in the Add New Connection wizard, and then press and release the Connect (CON.) button 1~2 times on the back of the WingMouse. (Ensure that you complete steps 4 and 5 within three minutes; otherwise, return to step 4.)
6. When the Searching for Bluetooth Devices window appears, wait for a minimum of 20 seconds to allow your computer to connect with the Wing Mouse.
7. When the connection is completed and OmniMotion Air mouse appears in the list, select the OmniMotion Air mouse from the list, and then click Next.
8. Close the Bluetooth Settings window.

Special Operations

1. Drifting and Positioning

When the user holds the START button and the cursor starts drifting (slowly moving while the mouse is at rest), the positioning operation should be performed.

Positioning procedure: Put the WingMouse on the table at rest. Press and hold START button firstly, and then press and hold END button for 5 seconds. After releasing both buttons, you can test the cursor of WingMouse freely in order to check whether the positioning stops. If the cursor of WingMouse still drifts, you should repetitively process the procedure suggested above till the positioning stops finally.

2. Switch between DISCONTINUOUS or CONTINUOUS mode for cursor control

The WingMouse can be set either to a DISCONTINUOUS mode or a CONTINUOUS mode. Under DISCONTINUOUS mode, the user needs to hold the START button of the WingMouse to control the cursor. Using the CONTINUOUS mode however, the user does not need to hold the START button for controlling the cursor.

The WingMouse used on the desk should always be switched to DISCONTINUOUS mode.

In the air, the WingMouse allows to work under DISCONTINUOUS mode or under CONTINUOUS mode.

Switching between both modes: Quickly click START button twice, all red LEDs under the buttons will start to shine for three seconds. After that LEDs will continuously flash to indicate that WingMouse is operated in CONTINUOUS Mode. Simply click START button once, and then WingMouse will switch to DISCONTINUOUS Mode immediately. When operating in DISCONTINUOUS Mode, all red LEDs will shine continuously, but not flash any more.

(NOTE: WingMouse will consume more power in CONTINUOUS Mode rather than DISCONTINUOUS. It is recommended to turn POWER SWITCH off or switch to DISCONTINUOUS Mode once WingMouse is no longer operated in the air. Therefore, the longer operation time for WingMouse can be guaranteed.)

Additionally, when the WingMouse is set to CONTINUOUS mode can get back to the DISCONTINUOUS mode and use on putting back the WingMouse on the table.

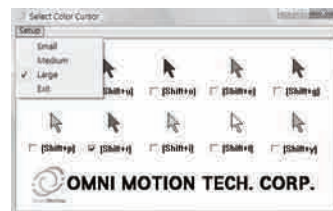
3. Rechargeable battery charge

When the rechargeable battery voltage is low, the battery-low LED shines, and the user can connect the USB port of the WingMouse and PC via USB cable to charge the rechargeable battery, meanwhile, user should turn off the POWER SWITCH of WingMouse, but the computer cannot enter sleep. During charging, the charge LED will show red and green color, the charge LED changes to a green color after the rechargeable battery is full.



4. Setup for Cursor Size & Color

While Wireless Air Mouse acts as presenter function in the presentation occasion, in order to achieve the most obvious indication capability of the mouse cursor. Omni Motion Technology specifically offers an application program which can switch to several different cursor sizes and colors fit to the background color of your power point file. You can download the program from the website <http://www.ommo.com.tw/> to select Download for CursorSetup program. While you run the program to option the suitable cursor size and color in Microsoft Windows, you won't need the laser pen with red point. (While Microsoft Office PowerPoint is used for your presentation, you can press the Right button of mouse to point the <Arrow Option> of <Cursor Option>, then select <View> to show cursor always display, please study the Microsoft Office PowerPoint user guide for detailed operation)



Note : When the computer is off, you should also turn off WingMouse to save battery power.

5
6
7
8

Caution

(P.S. The product is sold on worldwide except USA.)

End-of-life Battery Disposal Instructions. This device contains an internal, rechargeable battery (3.7V 45x20x5mm). In general, the life expectancy of such batteries is dependent upon their usage. Heavy daily use will result in a shorter battery life. Casual use will extend the battery life. If you suspect that the rechargeable battery inside your device has a low charge, try charging it. If the battery does not recharge after several attempts, it may be non-operational and should be replaced. The user should not replace this battery him/herself, instead the local agent should be contacted. Be sure to dispose of your battery in accordance with the laws and regulations in your area that specify the proper disposal of non-functioning electronic devices. If there are no such laws or regulations, please dispose of your device in a waste bin for spent electronic gear.

CAUTION : The battery used in this device may present a risk of fire or chemical burn if mistreated. Do not disassemble, expose to heat above 70°C (158°F), incinerate, or immerse in water or liquid of any kind. Do not use or charge the battery if it appears to be leaking, discolored, deformed, or in any way abnormal. Do not leave your battery discharged or unused for extended periods of time. When the battery is misused, it may explode or leak, causing burns and personal injury. If the battery leaks, use normal precaution and discard it immediately following the laws and regulations governing battery disposal in you area. Remember that a leaking battery can cause skin burns or other personal injury. Keep batteries always out of reach for children.

Hardware Product Limited Warranty

We warrants that your hardware product shall be free from defects in material and workmanship for one year, beginning from the date of purchase. Except where prohibited by applicable law, this warranty is nontransferable and is limited to the original purchaser. This warranty gives you specific legal rights, and you may also have other rights that vary under local laws.

Limits of Warranty

This warranty dose not cover problems or damage resulting from (1) accident abuse, misapplication, or any unauthorized repair, modification or disassembly; (2) improper operation or maintenance, usage not in accordance with product instructions or connection to improper voltage supply; or (3) use of consumables, such as replacement batteries, not supplied by us except where such restriction is prohibited by applicable law.

Remedies

Our entire liability and your exclusive remedy for any breach of warranty shall be, at our option, to repair or replace the hardware, provided that the hardware is returned to the point of purchase or such other place as we may direct, with a copy of the sales receipt and/or local warranty card. Shipping and handling charges may apply except where prohibited by applicable law. Our may, at its option, use new or refurbished or used parts in good working condition to repair or replace any hardware product. Any replacement hardware product will be warranted for at least the remainder of the warranty period.

How to Obtain Warranty Support

Before submitting a warranty claim, we recommend you visit the support section at <http://www.ommo.com.tw/> for technical assistance. Valid warranty claims are generally processed through the point of purchase during one year after purchase. The addresses and customer service contact information for us can be found in the documentation accompanying your product.

Limitation of Liability

We shall not be liable for any special, indirect, incidental, or consequential damages whatsoever, including but not limited to loss of profits, revenue or data (whether direct or indirect) or commercial loss for breach of any express or implied warranty on your product even if we has been advised of the possibility of such damages.

Duration of Implied Warranties

Except to the extent prohibited by applicable law, any implied warranty or condition of merchantability or fitness for a particular purpose on this hardware is limited in duration to the duration of the applicable limited warranty period for your product.

No Other Warranties

No our dealer, agent, or employee is authorized to make any modification, extension, or addition to this warranty.

Innovative, Professional and Reliable

Made In Taiwan

