

环通精密工业股份有限公司

POLYMAX PRECISION INDUSTRY CO. LTD

承 认 书

APPROVAL SHEET

客户名称 (CUSTOMER) :

品名 (DESCRIPTION) : UNIVERSAL AC PLUG

品号 (PART NO) :

承认号码 (APPROVAL SHEET NO) :

提出责任者签章 (APPROVER CHOP) :

客户承认 (CUSTOMER APPROVAL) :

提出日期 (SENDING DATE) : 01-28-2008

目 录

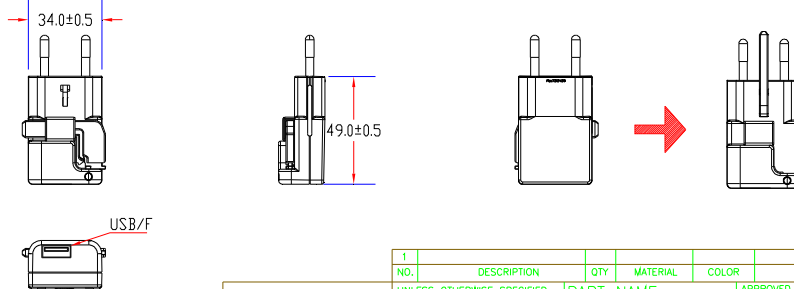
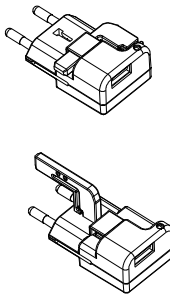
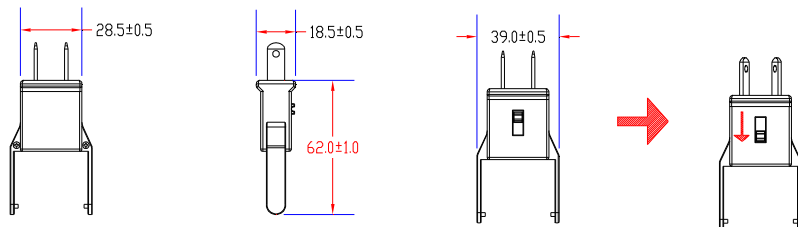
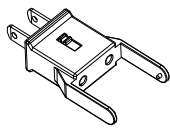
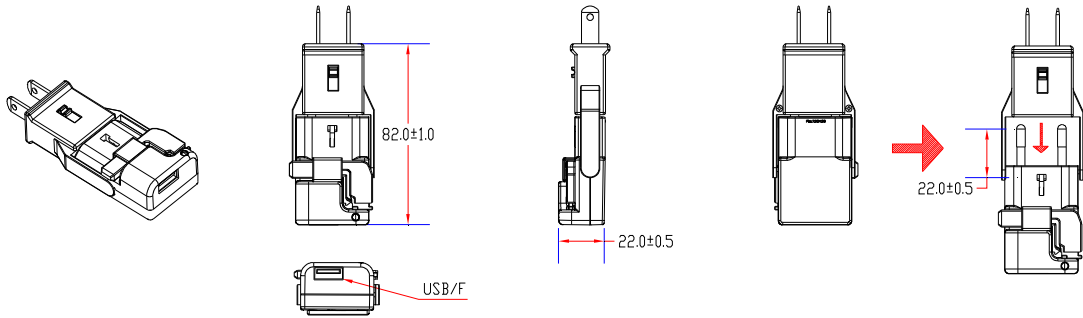
1. 产品规格图

2 . 线材规格图

3. 产品分部规格图

4. SGS报告

5. 认证



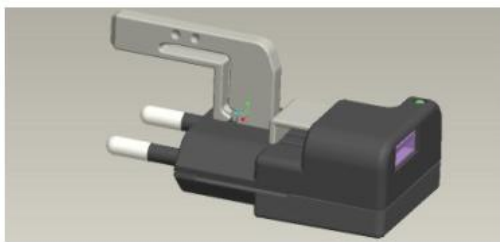
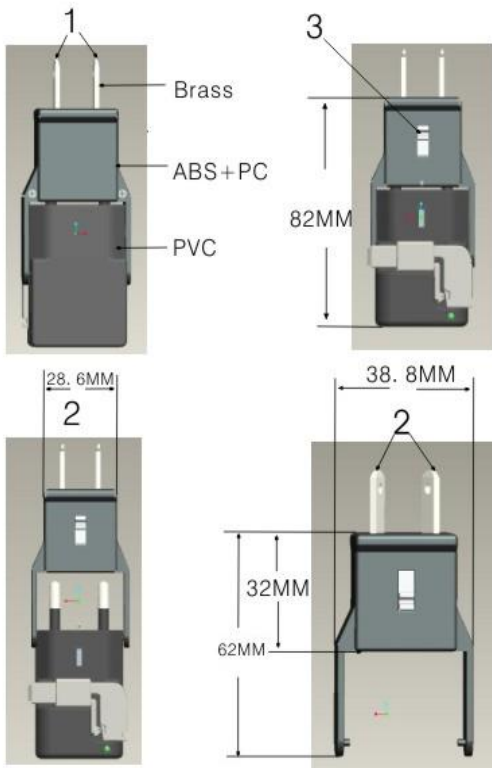
1					
NO.	DESCRIPTION	QTY	MATERIAL	COLOR	REMARKS
	UNLESS OTHERWISE SPECIFIED DIMENSION ARE IN MILLIMETER		PART NAME:	APPROVED	DATE(DD/MM/YY)
	TOLEGRANCE		CHONG-CATOU-B		
	DECIMAL ANGULAR		FILE NAME:	DRAWN	DATE
	.X ±1 X° ±D0			fan	2012/12
	.XX ±2 X.X° ±D1		VERSION	SCALE	PRINT:
	XXX ±3		V	S	P (P)
			ca F		

POLYMAX
POLYMAX PRECISION
INDUSTRY CO. LTD.

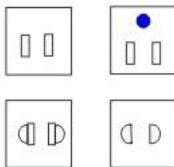
1. Instruction

Manual

MATERIAL



Type: A



(Common use type)

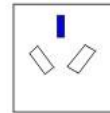
U. S. A, Egypt
Canada
Cambodia
Guam, saipan
Saudi Arabia
Japan. etc

Check the voliage of an electric product
Before inserting the plug into a power socket

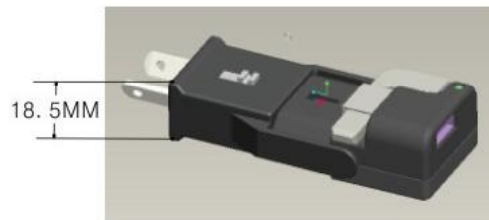
Name of the parts

1. Power socket plug pin
(Besides an 0.02 type power socket)
2. 0.02 type power socket plug pin
3. Width adjustment button for plug pin

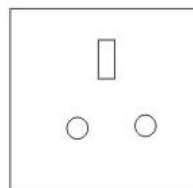
Type D



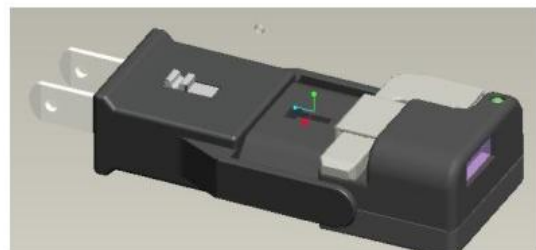
Australia,
Cook Lstands,
New Zealand
Fiji, etc

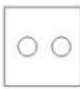
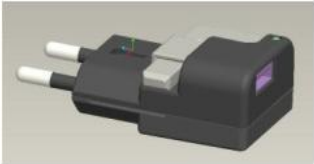



Type E



United Arab
Emirates, Iran,
India,
Indonesia,
Egypt,
Kuwait,
Etc



<p style="text-align: center; font-weight: bold;">Type B</p> <div style="text-align: center;">  </div> <p style="text-align: center;">Singapore, China, South Kuwait, India, etc,</p> <div style="text-align: center;">  </div>	<p style="text-align: center; font-weight: bold;">Type SE</p> <div style="text-align: center;">  </div> <p style="text-align: center;">Israel, Iran Indonesia, Egypt, Austria, Netherlands, Greece, Kuwait, Switzerland, Sweden, Spain, etc</p>	<p style="text-align: center; font-weight: bold;">Type C</p> <div style="text-align: center;">  </div> <p style="text-align: center;">Algeria, Italy, Israel, Iran, India, Indonesia, Egypt, Austria, Kuwait, Saudi, Arabia, Switzerland, Sweden, Tai, China, Germany, etc</p>
---	---	---

2. Electrical characteristics

2.1 Input rating

100Vac to 240Vac Nominal

50Hz/60Hz Nominal

2.2 Input current

0.3A RMS @90Vac full load

2.3 Fuse Rating

12Ω 1/4W

2.4 Output rating

Vout: 5.65Vdc ± 0.25V @ no load

Vout: 5.65Vdc ± 5% @ rated load

Iout : 500mA max

2.5 Ripple Noise

600mVp-p @ max load 500mA

2.6 Efficiency

60% min

2.7 Short Circuit Protection

Auto-recovery

2.8 EMI Requirement

CE compliance

3. Environment

3.1 Operating Temperature

Range : 0°C ~ 40°C

3.2 Storage Temperature

Range : -10°C ~ 70°C