

# IOVU-570M

## RISC-based Panel PC

The IOVU-570M is powered by Marvell XScale® PXA270 and Windows CE 5.0. Its 520MHz high performance CPU, VGA (640 x 480) TFT LCD, and resistive touch input provide customers with a powerful platform for graphical user interface (GUI) and supervisory control and data acquisition (SCADA) applications. The IOVU-570M provides rich networking function, such as dual Ethernet, WiFi, USB, and serial port, for easy and seamless networking to existing communication networks. Its rugged, compact, fanless, and IP64 front panel designs make it especially durable in harsh environment and wide temperature.

**NEW!**

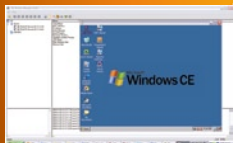


### Features

- RISC-based processor provides high performance and extremely low power consumption
- 5.7" TFT VGA LCD with resistive touch screen
- Default 1GB secure digital card for OS and user data/programs
- Built-in 802.11b/g Wireless LAN module
- Built-in 1.5W speakers
- IP64 compliant front panel
- Fan-less design for rigorous environments
- Preinstalled Windows® CE5.0 operating system
- Windows® CE5.0 SDK for user application software development



WiFi function supports 802.11b/g



Remotely control



#### SD card

Preinstalled Windows® CE5.0 or ARM-Linux boot from secure digital card



Dual LAN function provides Ethernet redundant area application



Software controllable RS-232/422/485 has industrial communication be more flexible.

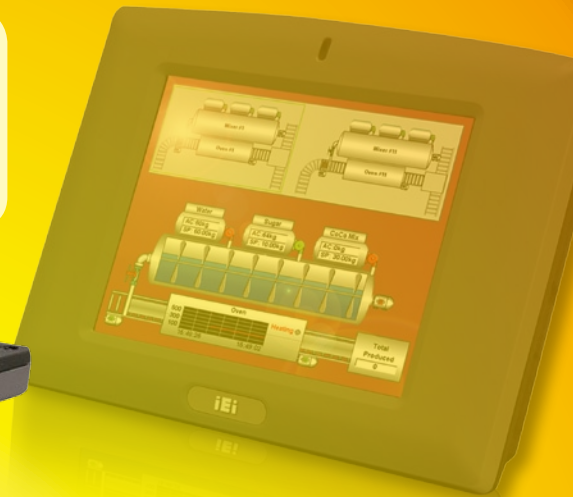
# Application



SD card

Preinstalled Windows® CE5.0 or ARM-Linux boot from secure digital card

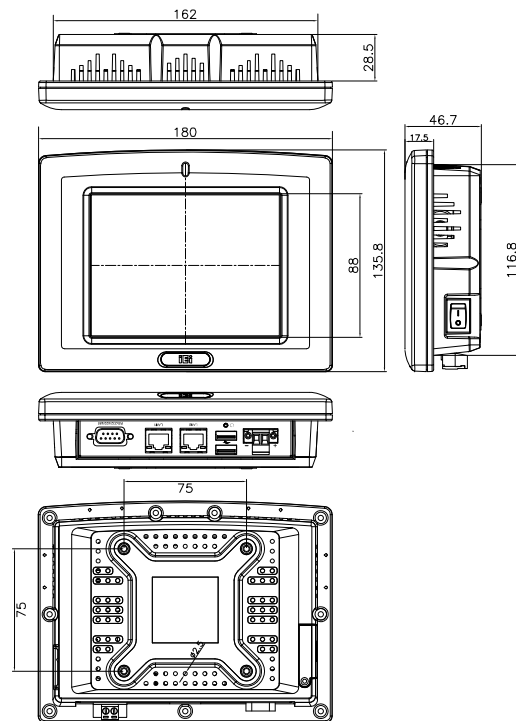
- 2 x USB1.1 host
- 12~36 V DC-IN
- Reset button
- 10/100Mbps LAN
- RS-232/422/485 (software controllable)



## IOVU-570M Specifications

<b>Model</b>	<b>IOVU-570M</b>
<b>LCD size</b>	5.7"
<b>Max. Resolution</b>	640 x 480
<b>Brightness (cd/m<sup>2</sup>)</b>	400
<b>LCD Color</b>	262K
<b>Pixel Pitch (mm)</b>	0.06(H) x 0.18(V)
<b>Backlight MTBF</b>	25000 hrs
<b>Touch Screen</b>	Resistive type
<b>CPU</b>	MARVELL XScale® PXA270 520MHz
<b>RAM</b>	128MB SDRAM
<b>Bootloader Storage</b>	2MB boot ROM
<b>OS/Program Storage</b>	1GB secure digital card
<b>I/O Ports and Switches</b>	1 x RS-232/422/485 (software controllable) 2 x 10/100Mbps LAN 2 x USB1.1 host 1 x SD card slot 1 x Reset button 1 x On/Off power switch 2pin terminal block DC input Built-in WiFi module : 802.11b/g
<b>Audio</b>	1.5W speaker x 2
<b>Construction Material</b>	ABS + PC Plastic
<b>LED Function</b>	1 x Power ON/OFF LED on front panel
<b>Mounting</b>	Wall, Stand, Vstand and Arm (VESA 50 x 50)
<b>Front Panel Color</b>	Black
<b>Dimension (W x H x D mm)</b>	180 x 135 x 45
<b>Operation Temperature (°C)</b>	-20 ~ 60
<b>Storage Temperature (°C)</b>	-20 ~ 80
<b>Net Weight (kg)</b>	0.7
<b>IP Level (front panel)</b>	IP 64
<b>Power Requirement</b>	12~36V DC input
<b>Power Consumption</b>	8W

## Dimensions (Unit : mm)



## Packing List

- 1 x IOVU-570M
- 1 x Utility CD includes application tools, SDK, and technical document.
- 1 x Null modem cable
- 1 x Touch pen

## Ordering Information

Part No.	Description
IOVU-570M-CE5/-R10	5.7", VGA fan-less touch panel PC with MARVELL XScale® PXA270 CPU, 128MB SDRAM, 802.11b/g wireless LAN and built-in Windows® CE5.0 Operating System



### Headquarters

威強工業電腦股份有限公司 IEI Technology Corp.  
No. 29, Jhongsing Rd., Sijhih City, Taipei County, 221, Taiwan  
TEL : +886-2-86916798 FAX : +886-2-66160028  
sales@ieiworld.com www.ieiworld.com

### America

IEI Technology USA Corp.  
168 University Parkway, Pomona, CA 91768  
TEL : +1-909-595-2819 FAX : +1-909-595-2816  
sales@usa.ieiworld.com www.usa.ieiworld.com

### China

威強工业电脑 IEI Technology (Shanghai) Co., Ltd.  
上海市闵行区宜山路 1728 号 3 楼。  
3F No. 1728 Yi-Shan Road, Min-Hang, ShangHai, China  
TEL : +86-21-3462-7799 FAX : +86-21-3462-7798,3462-7797  
sales@ieiworld.com.cn www.ieiworld.com.cn