

# FPrfid-S50

## Fingerprint Mifare S50 RFID Contactless Card

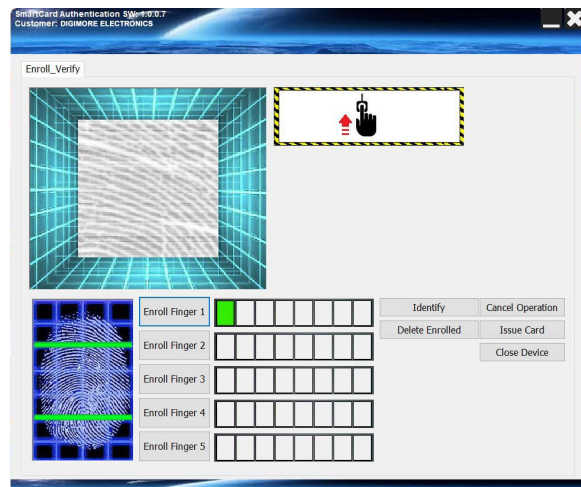
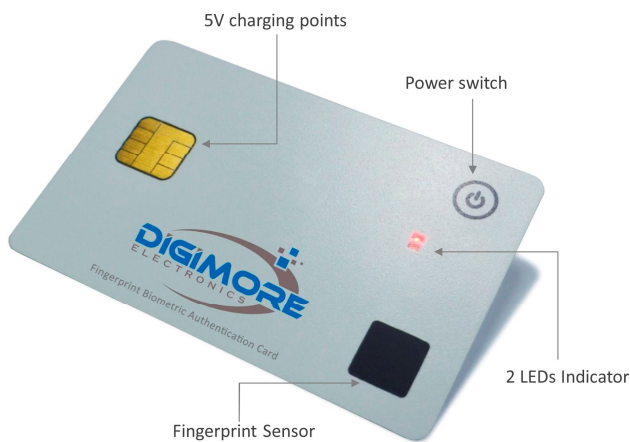


FPrfid-S50 is a powerful 13.56Mhz Mifare S50 RFID card built-in capacitive fingerprint sensor with MCU embedded recognition algorithms. The Cermet-like coating of the fingerprint sensor provides up to 6H hardness and protects sensors against scratch, impact, and daily wear-and-tear. It can be widely applied in various fields such as access control systems, locks, and safes, high-level security applications. With the software of fingerprint enrollment, the administrator can easily manage finger enrollment.

SPECIFICATION	
Mifare RFID Card	
Card Size	85.6 (L) x 54 (W) x 0.74 ~ 0.84 (T) mm
chipset	Philips MF1 IC S50
Frequency	HF 13.56Mhz
Card Material	ABS, PVC, PET as requested
LED Indicators	2 LEDs, red indicates power on; green indicates fingerprint recognition
Embedded Battery	Solid state battery for fingerprint sensor
Card Warping/ Curl Test	Compliance ISO/IEC 14443-1 4.3.3, ISO/IEC 10373-1 5.8
Capacitive FingerPrint Sensor	Charger for Fingerprint RFID Card
Resolution / Sensing Area	508 DPI / 8 x 8 mm or 160 x 160 pixel
Sensor Type	Capacitance Type
Supply Voltage	3.0 ~ 3.6VDC
Hardness / Surface	Up to 6H / Cermet-like Coating
FAR / FRR	0.0001 / < 2%
Fingerprint Template Number	Finger number x 5, each finger image x 8
Battery Life	300 times operation based on 6 sec. when pressing power button
Operating Temperature	-10 ~ 50° C / < RH 20 ~ 85%



## APPLICATION SOFTWARE OF FINGERPRINT ENROLLMENT



\* Features and specification are subject to change without notice.



DIGIMORE ELECTRONICS CO., LTD  
 10 Fl., No. 61, Yan-Ping S. Rd., Taipei 100, Taiwan  
 TEL: +886 2 2311 3299 FAX: +886 2 2311 3375  
 Email: digimore@gmail.com <https://www.digimore.com.tw>