



WM-2X8F series are wireless industrial BLE data-logger, which is suitable for real-time recording and save in the device.

Data-logger is designed in waterproof and dustproof and builed-in advanced BLE can resist the external interference and perform the serial communication. It can be connected by the mobile phone, tablet and other Bluetooth host device.

- BLE data-logger.
- BLE to RS-485 Gateway / BLE to UART Gateway.
- Around 240,000 records storage size.
- Record with real time tag.
- RS-485 MODBUS RTU interface.
- Small and waterproof design.
- Built-In antenna.
- Wide voltage operation.



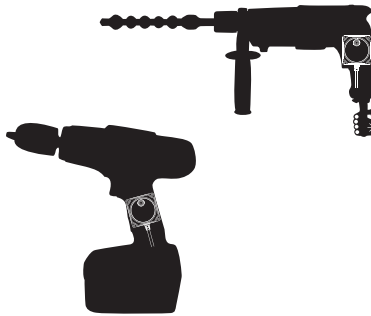
Product Type	Mini
Air Stream Protocol	BLE 4.2
Operating Frequency	2.4GHz
Sensitivity	Up to -93dBm@1Msps
Transmit RF Power	Maximum 4dBm
Interface	RS-485 x 1 or UART x 1
Serial Interface Baud Rate	1200bps / 2400bps / 4800bps / 9600bps / 19200bps / 38400bps 57600bps / 115200bps / 230400bps
Storage Size	16Mbits (around 240,000 records storage size)
Time Tag	Real time clock
Operating Temperature	-40°C ~ 85°C
Dimensions	5.7 x 5.7 x 2.05 cm
Weight	90 g
Waterproof	IP 67
Input Power Supply	10V ~ 28V DC / 18mA
Output Power Supply	5V DC / 100mA
Power Consumption	20mA@12V
Special Specification	Flame Retardant

* Specifications are subject to change, in the interest of technical improvement, without notice or obligation.

Applications of Tooling with Data Logger

How to show your quality of machine / equipment / environment for your clients. Using the Industrial Data Logger to record the parameters of machine / equipment / environment then show to them. Increasing clients satisfaction and business chances. Welcome to send your samples, drawings or to tell us your idea, and we will give you our quotation and sample ASAP.

1



Built-in WM-2X8F, Data Logger is with the recording function in drilling depth, time, coordinates and structure information.

2



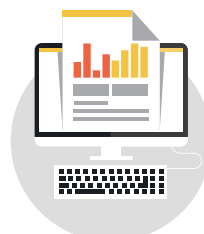
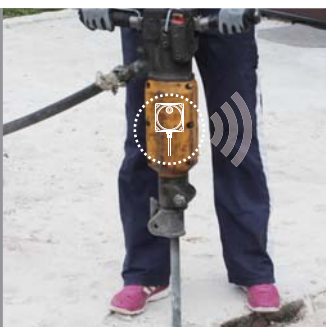
Monitoring real-time dynamic on mobile phone.

3



Support the remote operation to avoid dangers in construction areas and safeguard environmental safety.

4



Download data reports and effectively manage the construction quality.