

# TEP-1560-IMX6



## Main Features

- TEP-1560-IMX6 is a modular, scalable, fanless HMI based on a single/dual/quad core ARM Cortex-A9 NXP i.MX6 applications processor.
- 15.6 inch Projective Capacitive (multitouch) high resolution (1366 x 768), bright (300 nits) widescreen LCD with LED backlight.
- Compatible with TechNexion expansion boards series for additional I/O's.
- Available with brushed aluminum bezel.

## Specifications



### Core System

Processor	NXP i.MX6 Solo NXP i.MX6 DualLite NXP i.MX6 Quad
Architecture	ARM Cortex-A9
PMIC	NXP MMPF0100
Memory	up to 2GB DDR3
Storage	eMMC (4GB Default)

### Connectivity

Network LAN	1x Atheros AR8035 Gigabit LAN
Power over Ethernet	PoE function 802.3at (optional)

### Expansion Interfaces

Expansion Slots	2x M.2 slot 2x mini-PCIe with SIM cardslot
-----------------	---

### External Connectors

External Display	1x HDMI 1x VGA 15-pin D-SUB
Audio Connectors	1x 3.5mm jack Microphone 1x 3.5mm jack Stereo Audio in 1x 3.5mm jack Stereo Audio out
Network	1x RJ45
USB	1x USB 2.0 OTG (Type-C) 4x USB 2.0 Host
CAN Bus	2x Flex CAN version 2.0B compliant
Serial	2x RS-232
GPIO	8x GPIO
Buttons	1x Boot Select 1x Reset
SIM Cardslot	1x Micro-SIM /1x Mini-SIM cardslot
SD Cardslot	1x microSD cardslot

### Video

Video Decode	1080p30 + D1 (Solo/DualLite) 1080p60 H.264 (Quad)
Video Encode	1080p30 H.264 BP/Dual 720p

### Display

LCD	15.6 inch widescreen LCD with LED backlight
Resolution	1366 x 768 pixels
Luminance	300 cd/m <sup>2</sup>
Maximum Colors	16.7 million
Touchscreen	Projective Capacitive (multitouch)

### Audio

Audio Codec	NXP SGTL5000
-------------	--------------

### Power Specifications

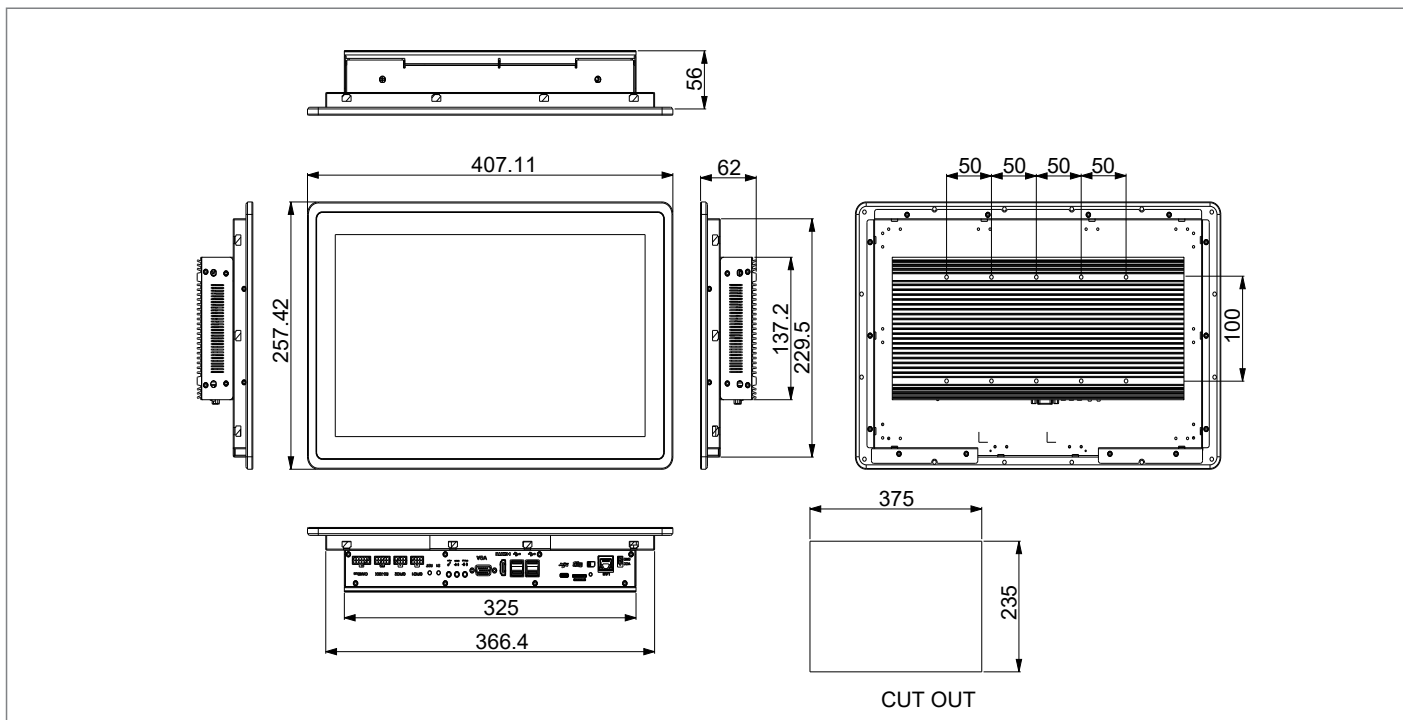
Power Input	Available with 12V 24V 8-36V (wide power input)
Power over Ethernet	PoE function 802.3at (optional)
Power Connector	2-pin Micro-Fit 3.0
Power Consumption	Depending on Configuration

### Operation Systems

Standard Support	Linux Yocto Ubuntu Android
Extended Support	Commercial Linux

## Dimensions

(units in mm)



## Environmental and Mechanical

Enclosure Material	Metal
Front Bezel	Brushed Anodized Aluminium
IP Rating	IP65 Front
Dimensions	407 (W) x 257 (H) x 62 (D) mm
Weight	4000 grams
Temperature	Commercial: 0° to +50° C
Relative Humidity	10 to 90 %
MTBF	50 000 Hours
Shock	15G half-sine 11 ms duration
Vibration	1 Grms random 5-500Hz hr/axis
Certification	Compliant with CE / FCC / RoHS / REACH directives

## Modular Expansion Options

Power Expansion Module	TXR-P1-12V-LAN1 (12V 3A) TXR-P1-24V-LAN1 (24V 3A) TXR-P1-1030V-LAN1 (8-36V 5A) TXR-P1-12V-POE1 (12V 3A) or (PoE 802.3at)
I/O Expansion Module	TXR-I2-GS2-GC2-GG8 (Galvanic Isolated) 2x RS-232 + 2x CAN + 8x GPIO TXR-I2-S2-C2-G8 2x RS-232 + 2x CAN + 8x GPIO

## Mounting Options

Rear Mounting	14 mounting clips required (included)
VESA Mounting	100*100 VESA MIS-D Standard (separate purchase)
Surface Mounting	16 mounting holes

## Ordering Information

TEP1560-IMX6x-Rxx-Exx-Lxxx-Xxxx-xxxx

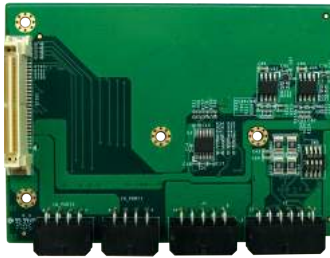
	Code	Description
Processor	IMX6S	NXP i.MX6Solo
	IMX6U	NXP i.MX6DualLite
	IMX6Q	NXP i.MX6Quad
Memory	R05	512MB DDR3
	R10	1GB DDR3
	R20	2GB DDR3
Storage	E04	eMMC capacity in Gigabytes E04 = 4GB / E08 = 8GB / E16 = 16GB E32 = 32GB / E64 = 64GB
	L112	TXR-P1-12V-LAN1 (12V 3A)
Power Expansion	L124	TXR-P1-24V-LAN1 (24V 3A)
	L130	TXR-P1-1030V-LAN1 (8-36V 5A)
	LPOE	TXR-P1-12V-POE1 (12V 3A) or (PoE 802.3at)
	-	-
I/O Expansion	-	-
	XS20	2x RS-232 + 2x CAN + 8x GPIO
	XG20	2x RS-232 + 2x CAN + 8x GPIO (Galvanic Isolated)
Custom ID	XXXX	Custom Part number ID for customized Software loader and special component (BOM)

\* Feel free to contact us for customization requests.



### TXR-I2-GS2-GC2-GG8

- 1x GALVANIC ISOLATED SERIAL PORT RS232/422/485
- 1x GALVANIC ISOLATED SERIAL PORT RS232
- 2x GALVANIC ISOLATED CAN BUS CONTROLLER
- 4x GALVANIC ISOLATED GPIO INPUT
- 4x GALVANIC ISOLATED GPIO OUTPUT



### TXR-I2-S2-C2-G8

- 2x SERIAL PORTS RS232
- 2x CAN BUS CONTROLLER
- 8x GPIO



### TXR-P1-12V-LAN1

- 12V DC POWER INPUT
- 1x RJ45 LAN CONNECTOR



### TXR-P1-24V-LAN1

- 24V DC POWER INPUT
- 1x RJ45 LAN CONNECTOR



### TXR-P1-1030V-LAN1

- 8-36V DC WIDE POWER INPUT
- 1x RJ45 LAN CONNECTOR



### TXR-P1-12V-POE1

- POWER OVER ETHERNET (802.3at)
- 12V DC POWER INPUT
- 1x RJ45 CONNECTOR