

SOL

The Industrial Grade Embedded BOX PC



Front Panel



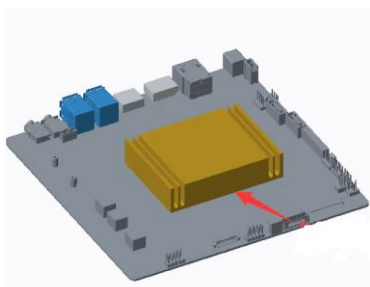
Back Panel

Features:

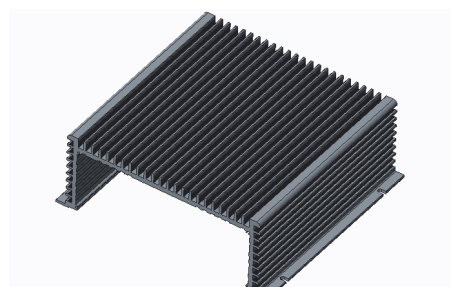
Waved Surface



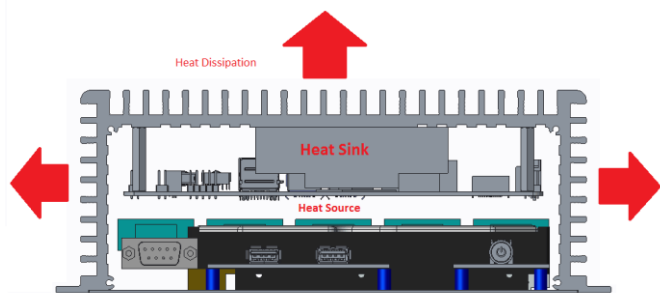
Waved surface heat-sink fins for maximum cooling performance



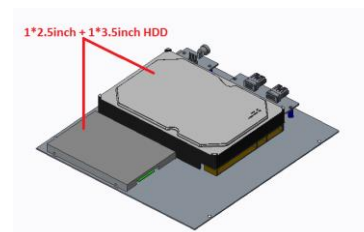
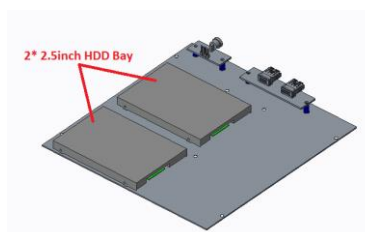
Aluminum Heat Sink + Silicon Connected to the Top Cover for CPU Heat Dissipation



Heat Sink Top and Side Design



Heat Dissipation Example



Dual HDD Connection – 2 * 2.5inch or 1* 2.5inch + 1* 3.5inch HDD Connection

Specifications:

CPU	Processor	Integrated Intel® J1900 / 2.00GHz Quad core, TDP 10W
	Chipset	Intel® Bay trail SOC
	Memory	2Gb Ram , Upgradeable up to 8Gb
Graphics	Graphics	Integrated Intel® HD Graphics
Storage	2.5' HDD	320Gb / 500Gb HDD
	CF	N/A
	SSD	32Gb / 64Gb / 128Gb SSD
Interfaces	Ethernet	1* RTL8111F 10/100/1000Mbps Ethernet, Support Wake-on-LAN/PXE
	USB	5* USB2.0, 1 x USB3.0
	Serial Port	6* RS232 COM (COM1 COM2 9pin Can choose live function,COM3 Support RS485/RS422)
	Display	1* VGA
	Audio	2* MIC,2*Line-out
	System Control	Power switch
	Wireless	2* WIFI/3G SMA antenna (optional)
	Watchdog	Support hardware reset function (L256, 0~255 seconds)
Power	Power	12V/5A adapter (support 8V~36V input)
Dimensions	Size	21* 20.5 * 8.2mm, 2.3kg
Reliability	Installation	Desktop or wall-mounted
	Operating T	-10°C~60°C
	Storage T	-20°C~70°C
	Relative humidity	5%-95%, no condensing
	Vibration	0.5g rms/5~500Hz/random operating
Box Packing	Carton	6pcs per carton, 53*29*41cm, 21kg

© 2012 PoS Tektronics Limited. The information contained herein is subject to change without notice.
 PoS Tektronics Limited shall not be liable for technical or editorial errors or omissions contained herein. Microsoft and Windows are trademarks of the Microsoft group of companies. Intel, Core, is trademarks or registered trademarks of Intel Corporation or its subsidiaries in the U.S. and other countries. Please visit relevant websites for more information



PoS Tektronics Limited

Rooms 1318-19, 13 / F, Hollywood Plaza, 610 Nathan Road, Mongkok, Kowloon, Hong Kong
 Email: pcpos@yahoo.com