



Versatile Digital Signage Player

SMP-2100



Highlights

- Equipped with 2 HDMI outputs for 2 Displays
- Provide 3 playback modes to show zone-type displays, individual programs, or playlists
- Support 1080p Full HD video, Flash®, HTML5, CSS3, weather, social media, etc.
- Unlimited Video zones, Image zones, and Ticker zones*
- Support 2 signal output modes: single and clone modes
- Offer flexible task scheduling based on once, daily, weekly, monthly, or yearly timescales
- Allow self-designed template creation either directly on SMP player or on your PC
- Make rich Library and cloud resources freely available

* Depending on your video resolution, codec, bitrates and hardware spec.

Ready-to-use Digital Signage Player

SMP-2100, the industrial-grade hardware, is bundled with dedicated digital signage software, SMP-NEO2, as a complete media player for digital sign applications. SMP-2100 and SMP-NEO2 are optimized to work well together. You can enjoy not only a seamless user experience, but also manage the device remotely from your web browser without installing any additional software.

Unique Dual Video Outputs Widely Broadening Applications

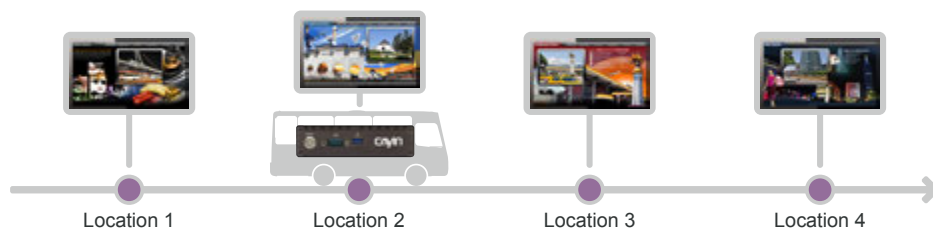
One SMP-2100 digital signage player can control two screens in both portrait and landscape orientation for most popular or even user-defined resolutions. Moreover, SMP-2100 supports the following two signal output modes:

A **Single Mode:** connect to one screen

A A **Clone Mode:** present identical contents on two screens

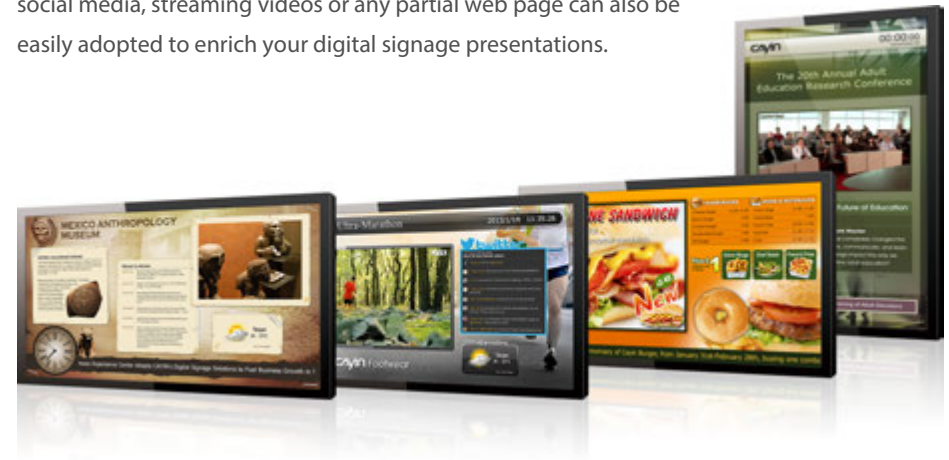
Mobile and Place-Based Digital Signage

SMP-2100 can be integrated with 3G and GPS technology to provide mobile and place-based solutions. Players installed in moving vehicles can playback contents based on both time and location. Administrators can also locate each player on Google Maps and instantly have an idea of overall connection status of all media players.



Built to Convey Instant and Media-rich Messages

SMP-2100 supports a variety of multimedia formats and can playback 1080p Full HD video, Flash® animation, HTML5 web page, image, music, and text ticker. The richness of your digital signage networks is not limited to promotional videos, other contents such as news, weather, social media, streaming videos or any partial web page can also be easily adopted to enrich your digital signage presentations.



Intelligent and Intuitive Scheduling Management

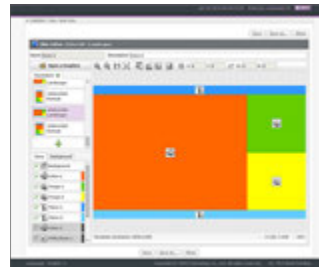


Playback schedules can be arranged in a variety of ways! You can insert a one-time event or arrange periodic tasks based on daily, weekly, monthly or yearly timescales. You can assign a date, a time period, or even a day in a specific week of a month (e.g. 2nd Sunday in May). Location-based scheduling is also doable to largely increase the flexibility.

SMP-2100 provides two viewing modes, calendar and timetable, for you to facilitate schedule management. In addition to editing a schedule directly on an individual SMP media player, you can also choose to centrally control multiple players in groups by a CMS server.

Easy-to-Use Template Creation in Two Ways

With SMP-NEO2, SMP-2100 provides a web-based Skin Editor so that users can perform a drag-and-drop operation to define the size and the location of each zone directly on SMP players. In addition, experienced web designers can also utilize any web-editing tool to create HTML pages with the greatest of flexibility.

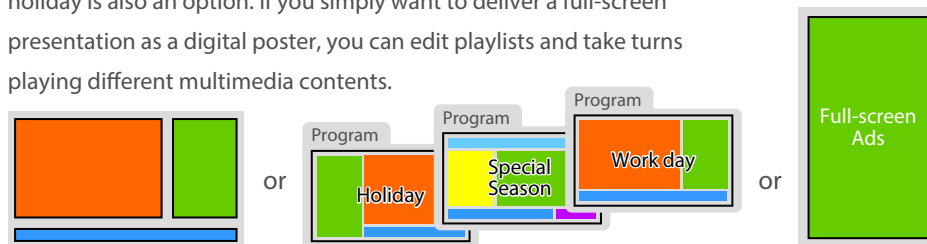


Instant Remote Diagnostics and Preliminary Maintenance

Administrators can perform troubleshooting remotely by retrieving log records and monitoring key operational activities, such as system resource usage, CPU temperature and network topology. To obtain the optimal performance and functionality, users will be prompted to install patches when new software updates are available. If an abnormal situation occurs, SMP-2100 is equipped with a self-repair mechanism to restart the system automatically. Administrators can also restore configurations or recover a system immediately whenever it is necessary.

Powerful Player to Meet Versatile Media Demands

SMP-2100 supports three playback modes for all occasions and applications. You can choose to divide the screen into several zones, each of which applies different media with independent schedules and settings. Packing all zones into one program for a special season or holiday is also an option. If you simply want to deliver a full-screen presentation as a digital poster, you can edit playlists and take turns playing different multimedia contents.



Flexible Platform for Extended Integration

SMP-2100 can be integrated with other external devices to meet requirements from diversified vertical markets. For instance:



Touch Screen:

easily extend to an interactive digital signage system incorporated with USB HID compliance touch screens.



RS-232:

turn on/off screens, adjust brightness, and control other devices, e.g. lamps or control panels.



Mobile Devices:

use mobile phones or tablets to change playlists



Web Server & Database:

possess great flexibility to integrate with web servers (RSS, weather, Twitter, etc.) and databases, such as CAYIN xPost.

Rich Library and Cloud Resources

All necessary raw materials, including multimedia files, fonts, clocks, skins, programs, and playlists, can be accessed easily in the Library to assist you in organizing resources. Moreover, the system allows you to upload your desired fonts or even to download the latest templates from CAYIN's Cloud service for free to greatly enrich your content.



System Specifications

System software	SMP-NEO2	
Content Creation	Zone type	<ul style="list-style-type: none"> • Able to use CAYIN Skin Editor to create templates either directly on SMP players or on your PC • Display zone: <ul style="list-style-type: none"> • Video zone x 2 (video file/streaming/audio) • HTML zone x 3 • Image zone x 2 • Ticker zone x 2 • Clock zone x 1 • Background image x 1
	Full-screen	• Use any web-editing tool to create HTML pages with unlimited Video zones, Image zones, and Ticker zones (*Depending on Hardware Spec)
Multimedia Playback	Playback modes	• 3 options: Skin, Program, and Playlist
	Web Pages	<ul style="list-style-type: none"> • Browser: Firefox (v31 Linux build) • Web language: support HTML 5⁽¹⁾, JavaScript, CSS3 and RSS feed • Plug-in: Adobe® Flash® Player (V 11, Linux build), CAYIN Media Player (Video and Audio), CAYIN Ticker, CAYIN Image Slideshow • Content: show whole or part of HTML/Flash files, remote URL, weather, social media (e.g. Twitter) or integrate with users' network facilities and databases
	Streaming Video	<ul style="list-style-type: none"> • CAYIN RTB (MPEG4-TS, MPEG2-TS; bit rate: 1~5 Mbps) • RTSP/RTP (MPEG-TS; Codec: MPEG-2/MPEG-4) • HTTP/MMS

⁽¹⁾ The compatibility is based on built-in Firefox browser.

Multimedia Playback	Video Files	<ul style="list-style-type: none"> • Format: MPEG (MPG, VOB), AVI (H.264), WMV, WMA, MP3, MP4 • Codec: MPEG-1/2, MPEG-4 ISO, WMV 7/8/9, H.264 • Bit-rate: up to 15Mbps (MPEG2, MPEG4, WMV, H.264) • Resolution: up to 1080p (1920x1080)
	Audio Files	<ul style="list-style-type: none"> • Format: WMA, MP3 • Codec: MP3, WMA 7/8
	Image Files	<ul style="list-style-type: none"> • Format: JPEG/GIF/BMP
	Preview	<ul style="list-style-type: none"> • Playback simulator: image, HTML/Flash, remote URL, and ticker
Schedule	Playback	<ul style="list-style-type: none"> • Local & central scheduling: edit schedules directly on an SMP player or centrally control multiple players in groups by a CMS server • View type: calendar or time table • Schedule mode: once, daily, weekly, monthly, yearly, and location • Playback type: able to edit scheduled tasks for each zone or as a full-screen display
	Screen, volume & system	<ul style="list-style-type: none"> • Set schedules to turn on/off the screen, adjust SMP's volume, or restart the system
Content Update	Methods	<ul style="list-style-type: none"> • Online (manually): FTP, Network Shares (Network Neighborhood), SMP's Web Manager • Online (automatically): CAYIN CMS server • Offline: USB Storage Device
System Settings	Language	<ul style="list-style-type: none"> • User Interface: Chinese (Traditional), Chinese (Simplified), English, French, German, Italian, Japanese, Polish, Portuguese, Russian, Spanish, Thai • Ticker Support: Unicode (UTF-8) compatible languages; able to use default fonts or upload TTF fonts⁽²⁾.

⁽²⁾ CAYIN doesn't guarantee that SMP-NEO2 is compatible to all font files.

System Settings	Display	<ul style="list-style-type: none"> • Screen resolutions: 640x480, 800x600, 1024x768, 1152x864, 1280x720 (720p), 1280x768, 1280x1024, 1360x768, 1366x768, 1600x900, 1600x1200, 1680x1050, 1920x1080, 1920x1200, 1920x1440; up to 2048 pixels for one side by User-defined mode • Portrait Mode: Support 90 and 270 degree display rotation • 2 signal output modes: Single and Clone modes • Support to detect EDID/DDC parameters • Support the screensaver function • Support to incorporate with USB HID compliance touch screen
	Time	<ul style="list-style-type: none"> • Set system time manually or synchronize the clock from an NTP server
	Location	<ul style="list-style-type: none"> • Track SMP's current location by GPS or simply show a static location in Google Maps
Remote Diagnostics and Maintenance	Hardware Monitor	<ul style="list-style-type: none"> • Check CPU temperature and utilization of CPU, system DRAM, and hard drive
	Log	<ul style="list-style-type: none"> • Create log files recording the system status • Able to purchase SuperReporter 2 to generate advanced playback reports
	System Update	<ul style="list-style-type: none"> • Automatic notification of patch and firmware updates
	Self-repair	<ul style="list-style-type: none"> • Able to restart/shutdown/recover the system and backup/restore configurations remotely.
Network	Protocol	<ul style="list-style-type: none"> • Support static IP and dynamic IP (DHCP) • Support HTTP, HTTPS, SMB, ICMP, RTP, RTSP, MMS, SYSLOG, NTP, FTP
Resources	Cloud-based	<ul style="list-style-type: none"> • Provide templates and materials in Library and Online Resources
Web Manager	Recommended browsers	<ul style="list-style-type: none"> • IE 11 or later, Chrome 35 or later, Firefox 31 or later

Hardware Specifications

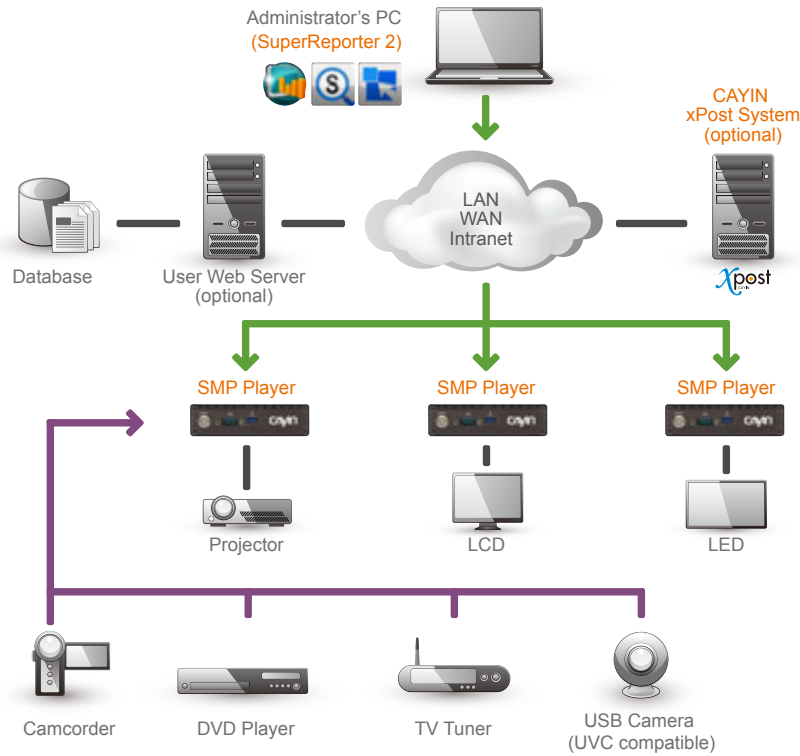
CPU	• INTEL® Bay Trail-M Quad-Core SoC Processor
Dimension	• 129 (W) x 109.4 (D) x 34 (H) mm
Weight	• 0.9 Kg
Network	• 10/100/1000 Mbps Ethernet • 802.11 b/g/n Wireless controller (optional) • 3G Data Network (optional)
Internal Storage	• SSD 32GB (Optional Upgrade: up to 256GB)
Video	• HDMI x 2
Audio	• Phone Jack (Analog Stereo) • HDMI Audio (Digital) • S/PDIF (Digital)
Power	• 100~240V AC (with external adaptor) • DC 12V, 3A
Others	• RS-232 (COM) x 1 • USB x 3
Peripherals	• Wall mount bracket
Certificate	• CE, FCC, RoHS, CB, BSMI



- 1 Power Button
- 2 RS-232
- 3 USB
- 4 Audio-out
- 5 USB x 2
- 6 HDMI x 2
- 7 Ethernet LAN
- 8 Power Connector

System Structure

Networked Standalone Digital Signage Player



Digital Signage Network with Client-Server Structure (CMS server + SMP player)

