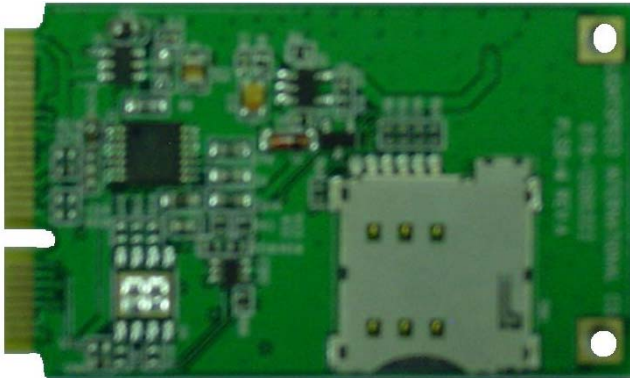


## PLS8-M LTE MiniPCle Module



**LTE MiniPCle card** is a versatile and easy-to-use highspeed device that provides excellent usability and various functions for applications from a distance, integrated into devices or application systems. This Card creates new opportunities to manage resources more efficiently. It is the latest step towards true wireless intelligence from the world leader in mobile solutions.



### KEY FEATURES

- PLS8-US-M:LTE 700/850/AWS(1700/2100)/1900MHz  
PLS8-E-M:LTE 800/900/1800/2100/2600MHz  
3GPP Release 99
- Wireless bearers
  - LTE/HSPA+/HSPA/UMTS/EDGE/GPRS  
Upload **50Mbps** max.  
Download **100Mbps** max
  - SMS, text and PDU mode,cell broadcast  
CSD data up to 14.4Kbps
- Compliant to GSM phase 2/2+
- SIM application toolkit (SAT Release 99)
- USSD support
- High quality voice (optional)

- GPS and AGPS (optional)

### TECHNICAL DETAILS

- RF power (max.)
  - Class 4,2W (900 MHz) / Class 1,1W (1800 MHz)
  - Class 4,2W (850 MHz) / Class 1,1W (1900 MHz)
- Power consumption (estimates)
  - Standby 12-29 mA
  - GPRS 310-690 mA
  - Peak 2 A

### INTERFACES

- Standard miniPCle USB 3.3V (3.0-3.5V) typical.
- SIM card interface (3V/1.8V) on miniPCle  
MicroSIM card interface(optional)  
Component SIM IC(optional)
- Analog audio for Mic & speaker(optional)
- Antenna connector
- ADC/DAC (PWM) interface(optional)
- VoLTE optional

### Driver

- Driver for Windows, Mac, Linux, WinCE.

### Others

- Operating temperature range:-40C to +85C
- Weight:7.6g
- Size:51 x 30x 4.8 mm
- RoHS and EuP compliant
- Embedded component SIM (optional)

### Approval

- Attach module is from Cinterion PLS8 or has been approved by CE, R&TTE, GCF, FCC, PTCRB,IC, AT&T.

### LIGHTSPEED International Co.

No.20 Lane 526 Niu Pu East Rd. Hsin Chu Taiwan

Tel:+886 3 5396570 Fax:+886 3 5401872

Web : [www.lightspeed.com.tw](http://www.lightspeed.com.tw)

Contact : [peter@lightspeed.com.tw](mailto:peter@lightspeed.com.tw)