

DataTale SMART 2-Bay RAID System

Makes Complicated Storage as Easy as 1-2-3!

- Supports current SATA compliant HDDs
- Connects flexibly via USB 2.0, eSATA, 1394a, or 1394b
- Provides JBOD, RAID 0 (Striping), RAID 1 (Mirroring), and Span
- Configures RAID modes easily using RAID MASTER (GUI)
- Monitors System status via LED indicators or RAID MASTER
- Prevents over-tightened HDDs with auto-limiting segmented screws
- Features effortless and trayless HDD hot-swap & hot-plug with SmartGuider
- Dissipates heat efficiently with aluminum housing and SmartGuider design
- Maximizes airflow with silent fans and mechanical designs

RS-M2QJ



The **DataTale SMART 2-Bay RAID System** helps prevent data loss and makes streamlining storage management easier. To deliver flexible connection ability, the **RS-M2QJ** provides four universal interfaces: USB 2.0, eSATA, 1394a, and 1394b, having instant operation via the most popular connectors for a 2-Bay! And with capability to hold two 3.5" SATA HDDs, the **DataTale SMART** can accommodate up to **4TB** of storage!

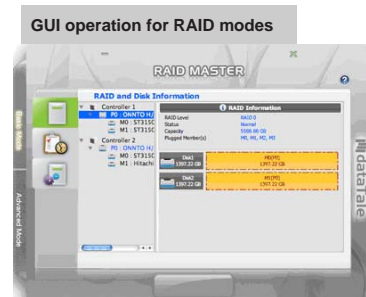
Managed by a user-friendly GUI (RAID MASTER), the **DataTale SMART** carries out RAID applications intelligently and quickly without hesitation! The

RS-M2QJ offers RAID Modes including: JBOD (None RAID), RAID 0 (Striping), RAID 1 (Mirroring), and Span (Large). Anyone can customize the DataTale **SMART** in a variety of ways based on preferences: double-speed with utmost storage space under RAID 0, double-safe data protection under RAID 1 mode, maximum storage capacity as one HDD under SPAN mode (Large), or individual HDD backup under JBOD mode (None RAID).

The SmartGuider* enables trayless HDD positioning, and effortless HDD hot-swapping whenever necessary. Maximized airflow is sustained by a combination of the low-dB fan with upright stand of the HDDs, exhausting hot air upward away from the high RPM SATA HDDs! Together with its vents and rugged aluminum case, the entire **DataTale SMART** design creates a tidy yet efficient channel for heat dissipation!

*Taiwan New Design Patent M354309

Furthermore, the LED indicators give immediate alerts of current System status, and the unique auto-limiting segmented screws prevent the HDDs from damages due to over-tightening during installation. Using the **DataTale SMART**, any two HDDs can be set up as a single HDD Enclosure (SPAN or Striping) or remain separated as a 2-Bay RAID System (Mirroring or JBOD) to perform the RAID storage desired. This way, storage capacities won't be wasted just because the HDDs are separated!



Specifications

Model	RS-M2QJ
HDD support	3.5" SATA HDD
Connectors	USB 2.0 x 1, eSATA x 1, 1394a x 1, 1394b x 2
RAID Level	JBOD (None RAID), RAID 0 (Striping), RAID 1 (Mirroring), Span (Large)
LED Indicator	Power / Connection / Health / Access / Rebuild / RAID Alert
Power Supply	Input: AC 100~240V; Output: DC +12V/3.5A; Peak current: 6A
FAN	Dimension: 80 x 80 x 10 mm; Speed: 1900 R.P.M +10%; Noise: 17.13 dB(A) max
Dimension	126 (L) x 138 (W) x 213 (H) mm
Weight	1.35 KGS

Specifications are subjected to change without notice

System Requirements

PC

266MHz or faster CPU
64MB of RAM
Microsoft Windows 2000, XP, 2003, Vista, 7 or higher

MAC

PowerPC or Intel Processor
64MB of RAM
Mac OS X 10.3 or higher (Power PC); or Mac OS X 10.4 or higher (Intel)

One available USB 2.0, eSATA, 1394a, or 1394b port



Data Watch Technologies Co., Ltd.

3F, No. 60, Lane 321, Yang Guang St., Nei-Hu, Taipei 114, Taiwan
TEL: +886-2-8797 8868 FAX: +886-2-8797 4801

DataWatchTM
www.datawatchtech.com