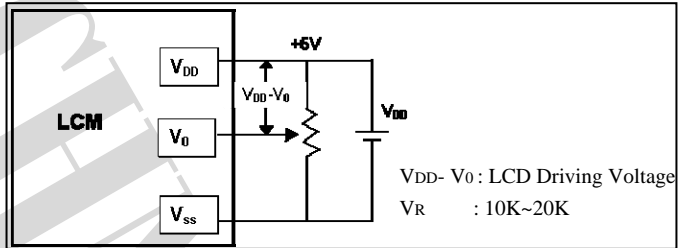
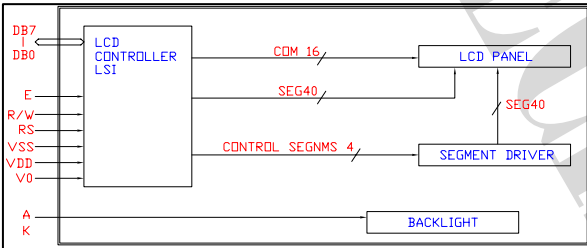
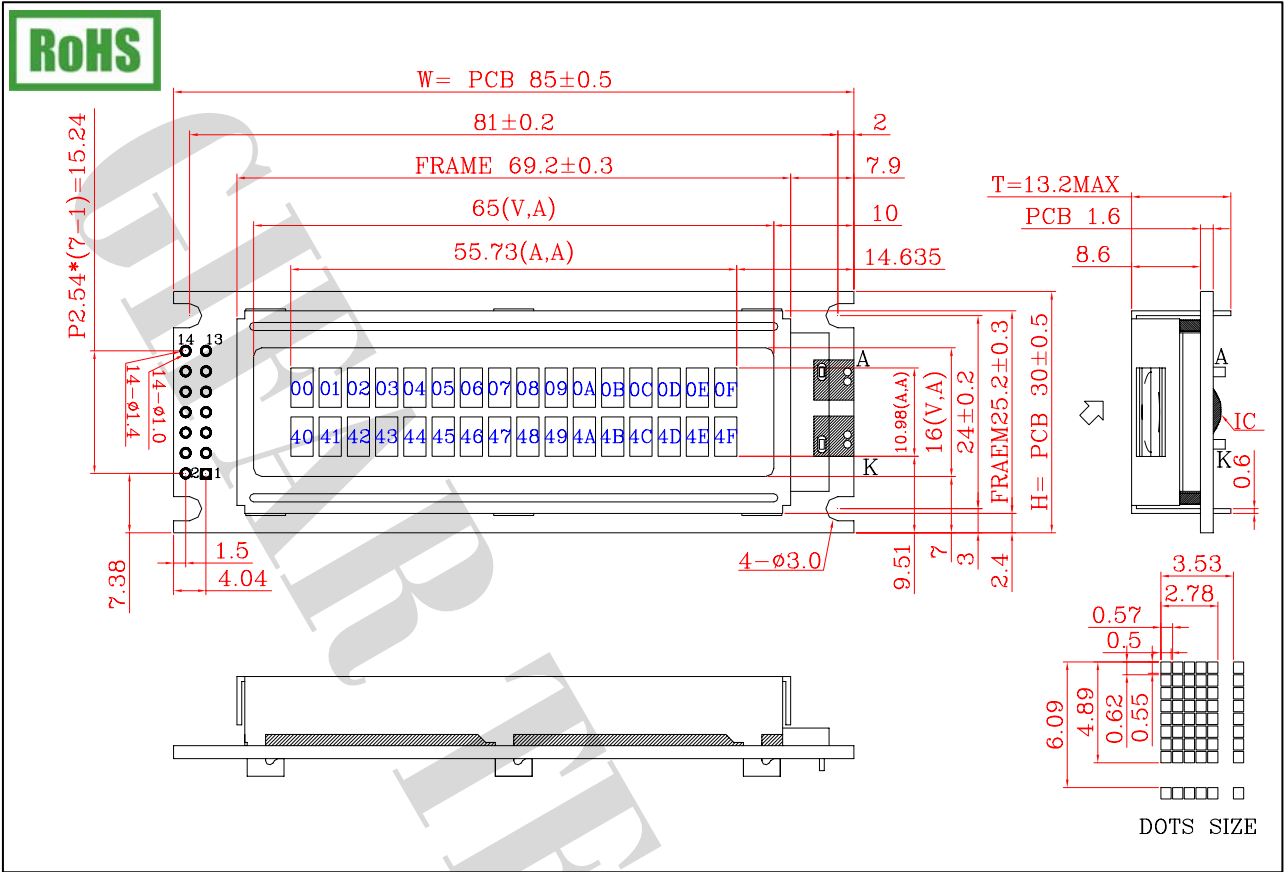


GFC1602M-BNFA-JP



Interface		
Pin no	Symbol	Function
1	VDD	Power supply(+)
2	VSS	Power supply (GND)
3	VO	Contrast Adjutment
4	RS	Data / Instruction select
5	R/W	Read / Write select
6	E	Enable signal
7	DB0	Date bus line
8	DB1	Date bus line
9	DB2	Date bus line
10	DB3	Date bus line
11	DB4	Date bus line
12	DB5	Date bus line
13	DB6	Date bus line
14	DB7	Date bus line

Feature						
Controller	SPLC780D	Module	85.0 x 30.0			
Duty	1/16 duty	Viewing Area	65.0 x 16.0			
Bias	1/5 bias	Mounting hole	81.0 x 24.0			
B/L	WHITE	Character Size	2.78 x 4.89			
Absolute Maximum Rating						
Item	Symbol	Condition	Min	Max	Units	
Supply for logic voltage	V _{DD} -V _{SS}	25°C	-0.3	7	V	
LCD driving supply voltage	V _{DD} -V _{SS}	25°C	-0.3	13	V	
Input voltage	V _{IN}	25°C	-0.3	V _{DD} +0.3	V	
Electrical Characteristics						
Item	Symbol	Condition	Min.	Typ.	Max.	Units
Power supply voltage	V _{DD} -V _{SS}	25°C	4.5	-	5.5	V
LCD operation voltage	V _{OP}	25°C	-	4.4	-	V
LED Forward Voltage	V _F	25°C	-	3.2	-	V
LED Forward Current	I _F	25°C	-	40	-	mA